



committed to life

**neumovent.SCHILLER**

# Product Portfolio



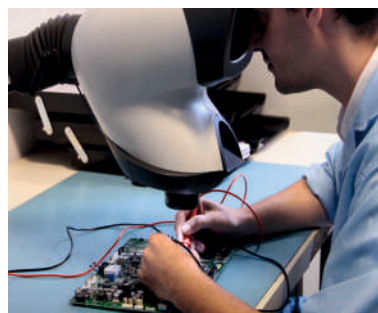
**SCHILLER**

The Art of Diagnostics

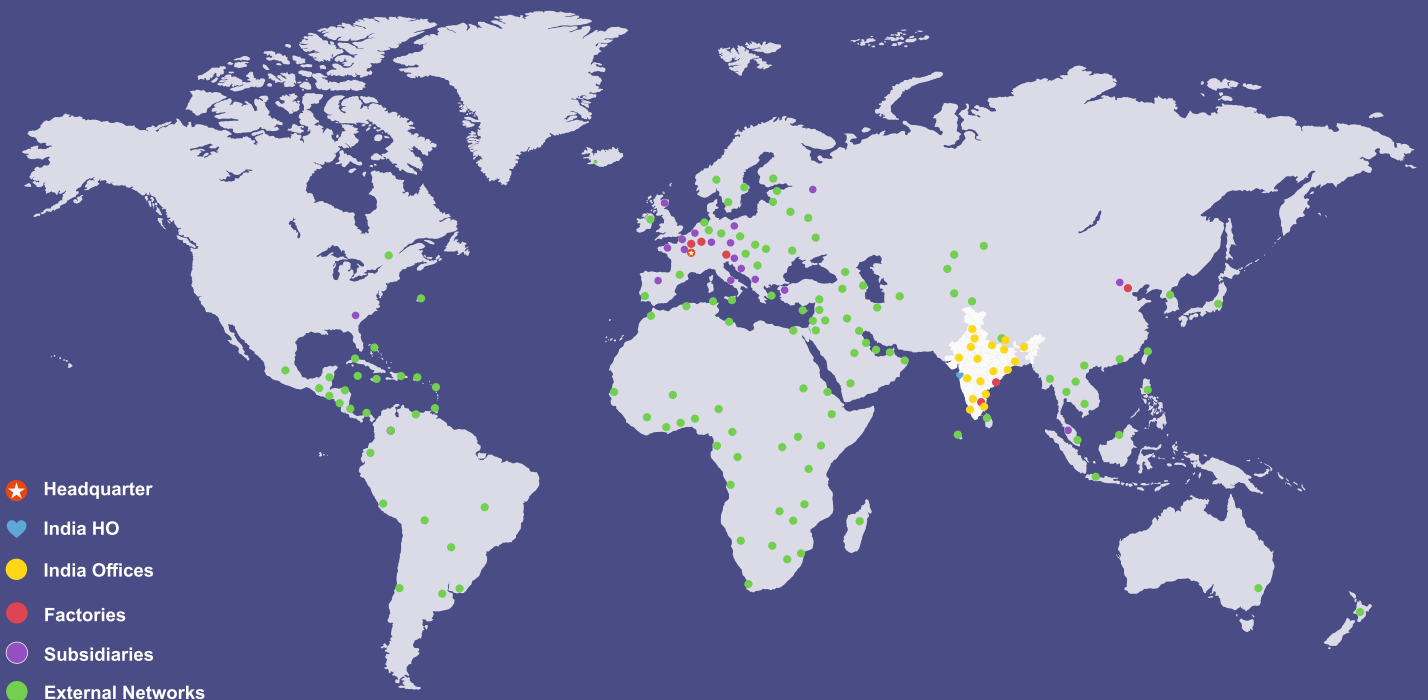
# Committed to life

SCHILLER is a global leader in the manufacturing and supply of cardiopulmonary diagnostic devices, defibrillators, patient monitoring systems, and medical software solutions for more than 50 years.

Over the past 27 years, SCHILLER has established itself as a leader in the medical technology sector in India. Schiller India offers state-of-the-art ventilators designed for advanced respiratory support in critical care. Our products enhance patient outcomes and healthcare efficiency, earning the trust of medical professionals. Schiller India's ventilators are synonymous with innovation and quality in respiratory care.



## Worldwide Presence of Schiller



# Product portfolio

## neumovent.SCHILLER

The mechanical ventilator that provides invasive and non-invasive ventilation, adaptable to any patient category.

### FEATURES

- Comprehensive monitoring.
- Adaptable to any hospital intensive care unit.



## Robust and Reliable

Neumovent is a microprocessor-controlled mechanical ventilator that incorporates the most advanced ventilation modes. It is one of the most solid and trustworthy devices of the market due to its compact design and the comprehensive monitoring of vital sign variables.

# GraphNet advance

GraphNet advance functionalities can be adapted to the patients needs due to its advanced technology, while its integrated sensitive touch screen and its intuitive operating system create a clear and simple user experience.

## Comprehensive monitoring

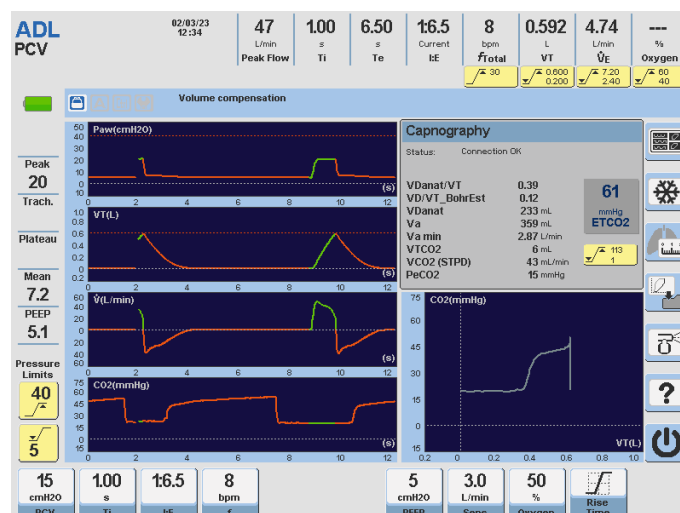
It is possible to monitor the most important parameters, from the beginning of the therapy, with P/V Flex, as well as the intermediate phases towards weaning, with P0.1 and Pimax, among other tests and variables.

## Spontaneous breathing test

This tool allows a spontaneous breathing test to be performed before weaning, monitored in real time and completely safe with dedicated alarms.

## Volumetric capnography

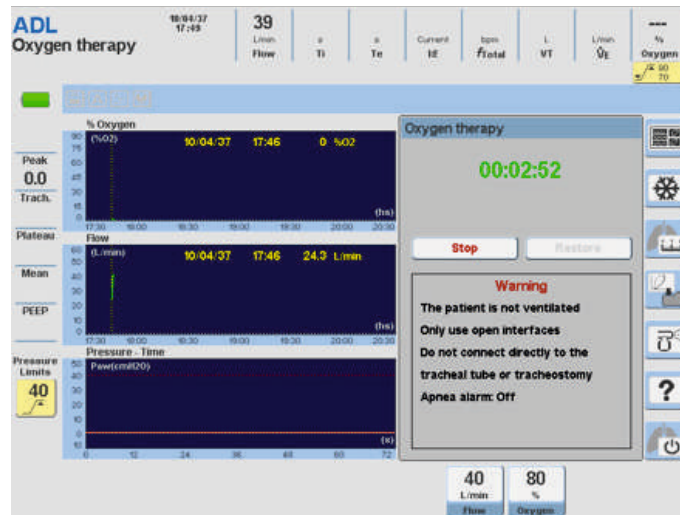
Integrated monitoring of exhaled  $\text{CO}_2$  and display of volumetric curves over time, as well as measurements of physiological dead space.





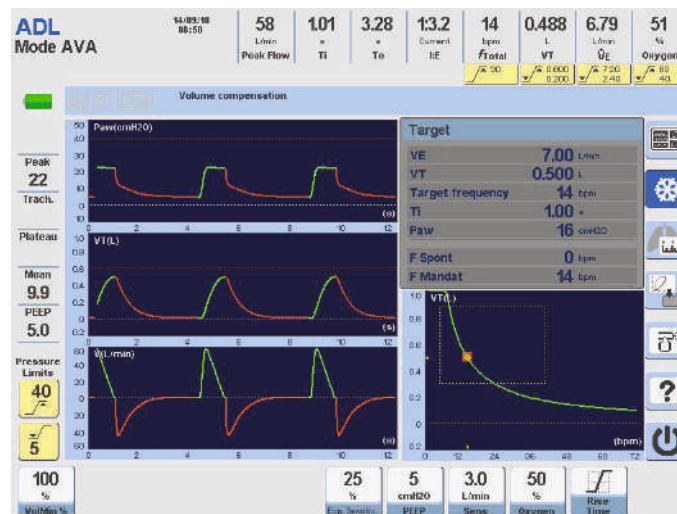
## High-flow oxygen therapy

The addition of this therapy expands the use of the ventilator to the stages that are prior and after the mechanical ventilation itself, by providing non-invasive assistance to oxygenation.



## AVA [Adaptive Ventilatory Assist]

The AVA mode is an adaptive closed loop mode with optimal control that guarantees minute ventilation of the patient generating a ventilatory pattern with the minimal respiratory work.



- Ventilation for adult, pediatric and neonatal patients.
- Available for invasive and non-invasive ventilation.
- High-flow oxygen therapy.
- Automatic leak compensation.
- Integrated volumetric capnography software.
- Comprehensive respiratory mechanics module.
- Neonatal proximal flow sensor.
- Endotracheal or tracheostomy tube compensation.
- Intra-hospital transportation.
- Spontaneous Breathing Test (SBT).
- 72 hours of trend storage.
- Low cost maintenance.
- Built-in battery with capacity higher than 2.5 hrs.
- Numerical screen.

# GraphNet neo



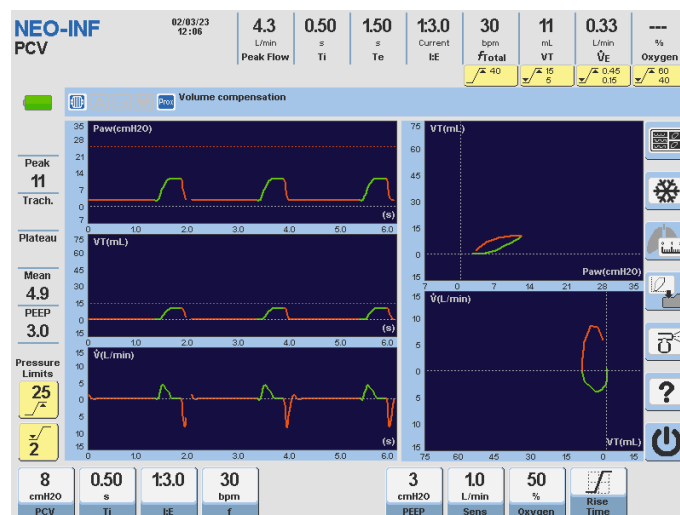
We are committed to life since the beginning.

Ventilators specially designed for the tiniest patients. Designed with specific technology for Neonatal Intensive Care Units, the **GraphNet neo** provides invasive and non-invasive ventilation to neonatal-infant patients, including premature babies. In addition, it allows the monitoring of the main ventilatory parameters, providing a comprehensive solution for the respiratory care of these little warriors.



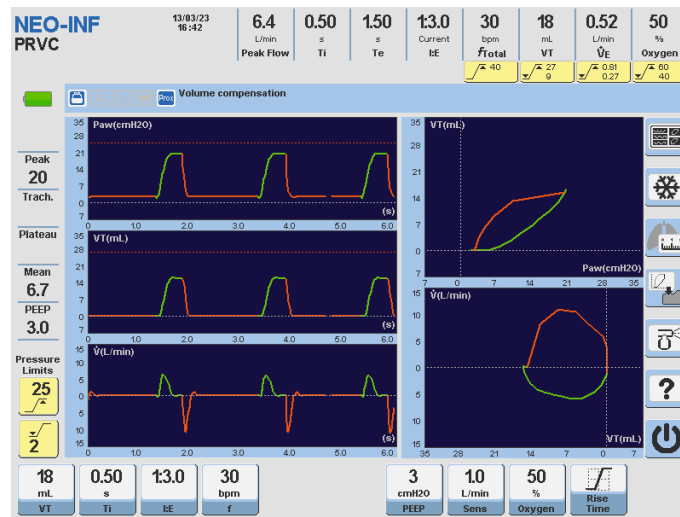
## Comprehensive monitoring

The proximal flow sensor optimizes flow and volume monitoring independent from compressible volume in the patient circuit. Measurement of ventilation parameters that allows making correct information-based decisions, increasing the effectiveness of treatment and guaranteeing patient safety.



## Targeted ventilation mode

PRVC is an adaptive mode with an automatic adjustment of the pressure setpoint to guarantee the volume configured by the user, taking into consideration the potential changes in the patient's lung impedance.



## High-flow oxygen therapy

The addition of this therapy expands the use of the ventilator to the stages that are prior and after the mechanical ventilation itself, by providing non-invasive assistance to oxygenation.



- Ventilation for neonatal patients.
- Available for invasive and non-invasive ventilation.
- High-flow oxygen therapy.
- Continuous flow CPAP: non-invasive ventilation using nasal prongs and with automatic leak compensation.
- Proximal flow sensor.
- Respiratory mechanics menu.
- Accurate tidal volumes from 2mL.
- Intra-hospital transportation.
- 72 hours of trend storage.
- Low cost maintenance.
- Built-in battery with capacity higher than 2.5 hrs.
- Numerical screen.



# GraphNet ts

As for the **GraphNet ts**, it is presented as a versatile device with upgradeable options to choose from: neonatal category, high-flow oxygen therapy, Adaptive Ventilatory Assist (AVA), and spontaneous breathing test (SBT). All these complements can be purchased separately optimizing the functionalities of the ventilator.

## Comprehensive monitoring

It is possible to monitor the most important parameters, from the beginning of the therapy, with P/V Flex, as well as the intermediate phases towards weaning, with P0.1 and Pimax, among other tests and variables.

## Wide range of ventilation modes

Pressure Regulated Volume Control (PRVC), Synchronized Intermittent Mechanical Ventilation with Pressure Regulated Volume Control SIMV (PRVC) and Volume Support Ventilation (VSV).

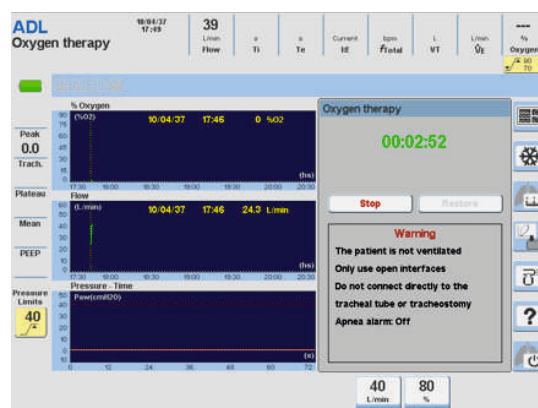
## OPTIONAL MODULES

### Spontaneous breathing test

This tool allows a spontaneous breathing test to be performed before weaning, monitored in real time and completely safe with dedicated alarms.

### High-flow oxygen therapy

The addition of this therapy expands the use of the ventilator to the stages that are prior and after the mechanical ventilation itself, by providing non-invasive assistance to oxygenation.



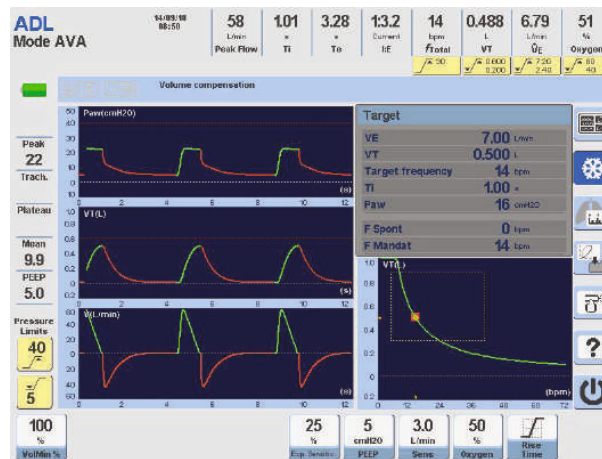


# Neonatal category

It incorporates ventilation methods that would allow patient ventilation from 5 ml tidal volume.

## AVA (Adaptive Ventilatory Assist)

The AVA mode is an adaptive closed loop mode with optimal control that guarantees minute ventilation of the patient generating a ventilatory pattern with the minimal respiratory work.



- Ventilation for adult and pediatric patients.
- Software upgradable for:
  - Neonatal ventilation.
  - High-flow oxygen therapy.
  - Spontaneous Breathing Test (SBT), Stress Index, Oxygen Index PaFi and C20/C.\*
  - AVA (Adaptive Ventilatory Assist).
  - Endotracheal Tube Compensation.
- Available for invasive and non-invasive ventilation.
- Automatic leak compensation.
- Comprehensive respiratory mechanics module.
- Intra-hospital transportation.
- 72 hours of trend storage.
- Low cost maintenance.
- Built-in battery with capacity higher than 2.5 hrs.
- Numerical screen.

\*Not available in all markets

# Ventilators Portfolio

**neumovent.SCHILLER**

advance

neo

ts



	advance	neo	ts
Patient Category	Adult, Pediatric, Neonatal	Neonatal / Infant	Adult, Pediatric, Neonatal (Optional)
Screen Size	12.1	12.1	12.1
Tidal Volume	2 to 4000 ml	2 to 350 ml	20 to 4000 ml (from 5 ml Neo)
NIV neonatal	●	●	Optional
AVA mode	●	-	Optional
Oxygen Therapy	●	●	Optional
Volumetric Capnography	●	-	-
Proximal Flow Sensor	●	●	-
Endotracheal Tube Compensation	●	●	Optional
SBT	●	-	Optional
Stress Index	●	-	Optional
Oxygen Index PaFi	●	●	Optional
C20/C	●	●	Optional

# neumovent air compressor

Small, Compact & Advanced design

The **Neumovent Air Compressor** provides clean and dry compressed air for mechanical ventilators.

It can be used as a primary source of air or an automatic backup system, in case of a failure of the main source of air in the medical facility.

The Neumovent Air Compressor is available for use with all Neumovent Ventilators: **Advance, Neo and Ts.**



Features	Alarms	Indications
Small	Temperature	Outlet pressure
Compact	Pressure	Working hours
Advanced design	Power	Drying

Technical specification	Neumovent Air Compressor
Nominal voltage and frequency (*)	230 V/50Hz - 115 V/60 Hz
Compressor efficiency	50 l.min1/ 3,5bar
Peak flow	200 l.min1
Air tank capacity	2 lit.
Filtration of air to	5 µm
Dew point depression at 3 bar, 20°C	5°C under the ambient temperature
Dew point depression at 3 bar, 20°C, with membrane dryer.	10°C under the ambient temperature
Outlet connection	DISS 1160-A (3/4-16 UNF)
Mode of the operation	Continuous - S1
Wall connection	yes
Classification according to MDD 93 / 42 / EEC, 2007 / 47 / EC	class II.b
Noise level	≤ 50 dB [A]
Dimensions (w x d x h) (**)	445 x 355 x 440 mm
Weight (**)	34 kg

\*Please state voltage and frequency in the order. \*\* Without trolley.

CE 2797



# SCHILLER

The Art of Diagnostics

SCHILLER, founded in 1974 by Alfred E. Schiller is a successful group with 30 subsidiaries and a global sales network. Today, SCHILLER is a world-leading manufacturer and supplier of devices for cardiopulmonary diagnostics, defibrillation and patient monitoring as well as software solutions for the medical industry.

Over the last 27 years, SCHILLER has established itself as a leader in the medical technology sector in India. With 400+ employees, two production centres and a R&D facility SCHILLER makes state-of-the-art healthcare equipment accessible through a network of 100 sales & service personnel spread across more than 45 locations. Our product range covers Critical Care, Anaesthesia, Emergency Care, Cardiology, Pulmonology, Radiology and Robotics.

Scan here  
to know more:



Part No.: B11.100003  5/23 Ver. no.: 1

Accessories shown are not part of standard configuration All registered trademarks acknowledged.

Technical data are subject to change without notice

**SCHILLER**  
The Art of Diagnostics

Swiss H.Q.: SCHILLER AG, Altgasse 68, P. O. Box 1052, CH -6341 Baar, Switzerland

Indian H.O.: Schiller Healthcare India Pvt. Ltd., Advance House, Makwana Road, Andheri (East), Mumbai-59. Tel : + 91 - 22 - 61523333

Factory : No. 15/5 & 15/6, Vazhuthavur Road, Kurumbapet, Puducherry - 605 009, India

Regional Offices: Mumbai: 022-61523333 Email: sales.west@schillerindia.com Delhi: 011-41062067 / 09312432205 Email: sales.north@schillerindia.com Kolkata: 033-23593102 / 033-23593103 Email: sales.east@schillerindia.com Chennai: 044-28232648 / 044-28311021 Email: sales.south@schillerindia.com Ahmedabad: 079- 35337949 / 079- 35337950 Email: sales.west@schillerindia.com Puducherry: 0413- 220 2680 / 0413- 229 2940 Email: sales.south@schillerindia.com

CIN : U33110MH1997PTC111307

 sales@schillerindia.com, help@schillerindia.com  www.schillerindia.com  1800 209 8998

Follow us on :  /SchillerHealthcareIndia  /schiller\_healthcare\_india  /schillerhealthcareindia  /schiller\_healthcare\_india  @schillerindia1074